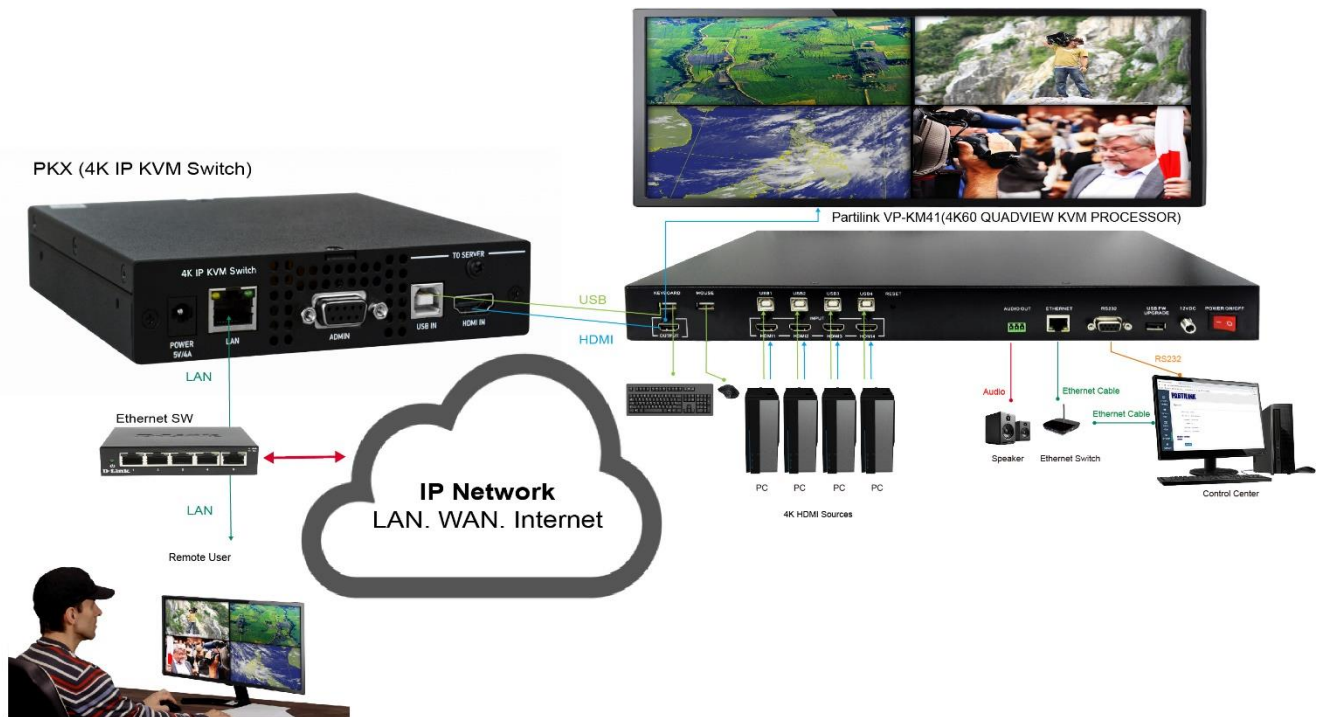


# 4K Quadiview KVM Processor over IP Solution



## OVERVIEW

Nowadays, the easy control remotely, space saving, cost-effective are the key factors to win the AV and KVM project. Partilink provides a “4K Quadiview KVM Processor Control over IP” total solution for administrator to control the system remotely through LAN/WAN/ Internet which means the administrators can log in the system to do their jobs from different locations such as from home, different cities and different countries simultaneously. Users can check 4 servers/ computers on one screen and roam to switch by mouse hotkey, web UI and command simultaneously.

## HIGHLIGHTS

- 4K Quadiview KVM Processor controlled over IP KVM Switch Remotely
- Enhance the productivity in working station more efficiently (None encode/ decode solution)
- High performance remote access via IP including WAN, LAN, Internet.
- Roaming over 4 port servers/ PC on screen to switch
- Mouse hotkey switch instantly and remotely

## APPLICATIONS

- Broadcast & control room
- IT & lab administration
- Video and dynamic application
- Remote office/ facility/ factory such as middle or small scaler power plant.
- Government & military
- 4K application



## VP-KM41



## 4K@60Hz HDMI QUADVIEW KVM PROCESSOR

1. HDMI 2.0 Quaview KVM switch and scaler all-in-one unit
2. Web UI, RS232, IR and front panel button control
3. Scaler: Scaling video resolution down or up to 3840x2160
4. Mouse hotkey switch between quadview & fullscreen mode
5. Roaming switch on the quadview screen

## SPECIFICATION

MODEL NO.	VP-KM41	
INPUT/ OUTPUT	<b>Inputs</b>	4 x HDMI 2.0 with locking
	<b>Output</b>	1 x HDMI 2.0 with locking
	<b>Audio Output</b>	terminal block 3 pole, stereo
IMAGE PROCESSING	<b>Display Mode</b>	full screen, quad view, PIP, PoP
	<b>Input Resolution</b>	up to 3840 x 2160@60Hz, 4:4:4 color sampling
	<b>Max Output Resolution</b>	up to 3840 x 2160@60Hz, 4:4:4 color sampling
	<b>Output Resolutions</b>	3840x2160 - 60Hz, 50Hz, 30Hz    1920x1080 - 60Hz 1280x720 - 60Hz    720x480 - 60Hz
	<b>Output Color Depth</b>	8 bpc (24 bit/px)
	<b>Scaler</b>	scaling up to 4K@60Hz, 4:4:4 color sampling and downscaling as well
	<b>Video Bandwidth</b>	up to 18 Gbps
	<b>HDMI Compliance</b>	HDMI 1.4 and HDMI 2.0
KVM	<b>Host Devices</b>	4 x USB type B for host devices
	<b>KVM</b>	2 x USB type A for keyboard and mouse console
CONTROL METHODS	<b>Front Panel Buttons</b>	4 x select HDMI 1,2,3,4 input and/or audio, 2 x display layout, 1 x Panel lock, 1x Standby
	<b>IR</b>	1 x IR remote control
	<b>RS232/ Telnet</b>	1 x D9 Female Connector / Compatible with third party control system
	<b>Ethernet Port</b>	1 x RJ45
STABILITY	<b>Web UI</b>	browser / touch screen
	<b>Safety</b>	hardware structure, no risk of virus interference
FIRMWARE	<b>Running Time</b>	no auto-reboot during 365 days/year, 7days/7, 24h/24
	<b>Possible Upgrade</b>	1 x USB 2.0
POWER	<b>Internal Power Supply</b>	DC 12V/2A, locking barrel connector
	<b>Power Consumption</b>	15W
	<b>Power Adaptor</b>	universal power adaptor
ENVIRONMENT	<b>Operating Temperature</b>	0 °C-45°C
	<b>Operating Humidity</b>	20-90% RH
	<b>Storage Temperature</b>	-20 °C-60 °C
PHYSICAL	<b>Dimensions</b>	440.4 x 230 x 45 mm (L x W x H, standard 1U)
	<b>Fixing Components</b>	Rear bracket, footpad and screws
	<b>Weight</b>	2.8 KG

## PKX

## 4K@30Hz HDMI KVM SWITCH OVER IP



1. 4K HDMI KVM Switch over IP
2. Flexible IP access LAN/ WAN/ Internet
3. Virtual media
4. Absolute mouse synchronization
5. LDAP & active directory authentication
6. AES Encryption
7. Virtual power button

MODEL NO.	PKX	
FORM FACTOR	Zero-U form factor, L bracket included, 3 nits rack in 1U with rack kit	
REMOTE CONNECTION NETWORK PROTOCOLS	1 Gigabit Ethernet (RJ-45) port IPv6/IPv4 dual stack, TCP/IP, Telnet, SSH, HTTPS, RADIUS, LDAP, DHCP and SNMP v2 & v3	
SERVER CONNECTION	HDMI Port with locking cord, USB-B to server USB-A port	
LOCAL CONNECTION	HDMI pass-through port. 2xUSB-A port for keyboard and mouse control	
VIDEO RESOLUTIONS	4096x2160@30Hz, 3840x2160@30Hz, 2560x1600@60Hz, 2560x1440@60Hz, 1920x1080@60Hz, 1920x1200@60Hz, 1600x1200@60Hz, 1680x1050@60Hz, 1440x900@60Hz, 1400x1050@60Hz, 1360x768@60Hz, 1280x1024@60Hz, 1024x768@60Hz, 1280x720@60Hz	
TERMINAL BLOCK	Output pins: Normally Open, Normally Closed, Common (Dry Contact). Supported load: 2A/30VDC, or 0.5A/60VDC or 0.3A/125VAC Input pins: Input & Input Ground (Dry Contact). Does not support any power input.	
POWER	100-240Volt AC50~60Hz, 12.5W/ 20W max/ operating, auto-sensing power with locking cord,	
ENVIRONMENT	Operating Temperature	0°C ~ 55°C
	Storage Temperature	-20°C ~ 80°C
	Operating Humidity	20% ~ 80% RH
	Storage Humidity	10% ~ 90% RH
DIMENSION	140 x 144 x 30 mm / 5.51" x 5.67" x 1.18" (W x L x H)	
WEIGHT	650 g/ 1.42 lbs.	