

# PARTILINK

HDMI 2.0 to 4K@30Hz PCIe Capture Card

**PCI-H01HP2**



User Manual (210721 v.1)

# Contents

1. Overview	03
2. Features	03
3. Specification	04
4. System Requirements	05
5. Installation	05
6. Capture Operation	06
6.1 Video Setting	07
6.2 Audio Setting	08
7. Package Contents	11



## 1. Overview

Partilink PCI-H01HP2, HDMI 2.0 to 4K@30Hz PCIe Capture Card, is designed to capture 4K@60Hz video, then uplink 4K@30Hz data to the computer through the PCIe. It allows the user to capture 4K HDMI video from sources such as PS4, XBOX, Switch, camera ...etc. for filing, re-editing and streaming via the PC.

It will not affect the performance of computer while maintaining a resolution up to 4K at 30Hz. with this 4K HDMI capture mate for PC, streaming media made easy to capture every sound and movement effectively and simultaneously

## 2. Features

- Supports HDMI input resolution up to 3840x2160@60Hz and HDR
- HDMI loop-out port supports resolution up to 3840x2160@60Hz and HDR
- Video capture resolution up to 3840x2160@30Hz or 1920x1080p@120Hz
- Supports deep color (36-bit color)
- Supports PCIe x 1 (Gen4)
- Compatible with third-party applications such as QuickTime, OBS, XSplit, vMix...etc.

### 3. Specification

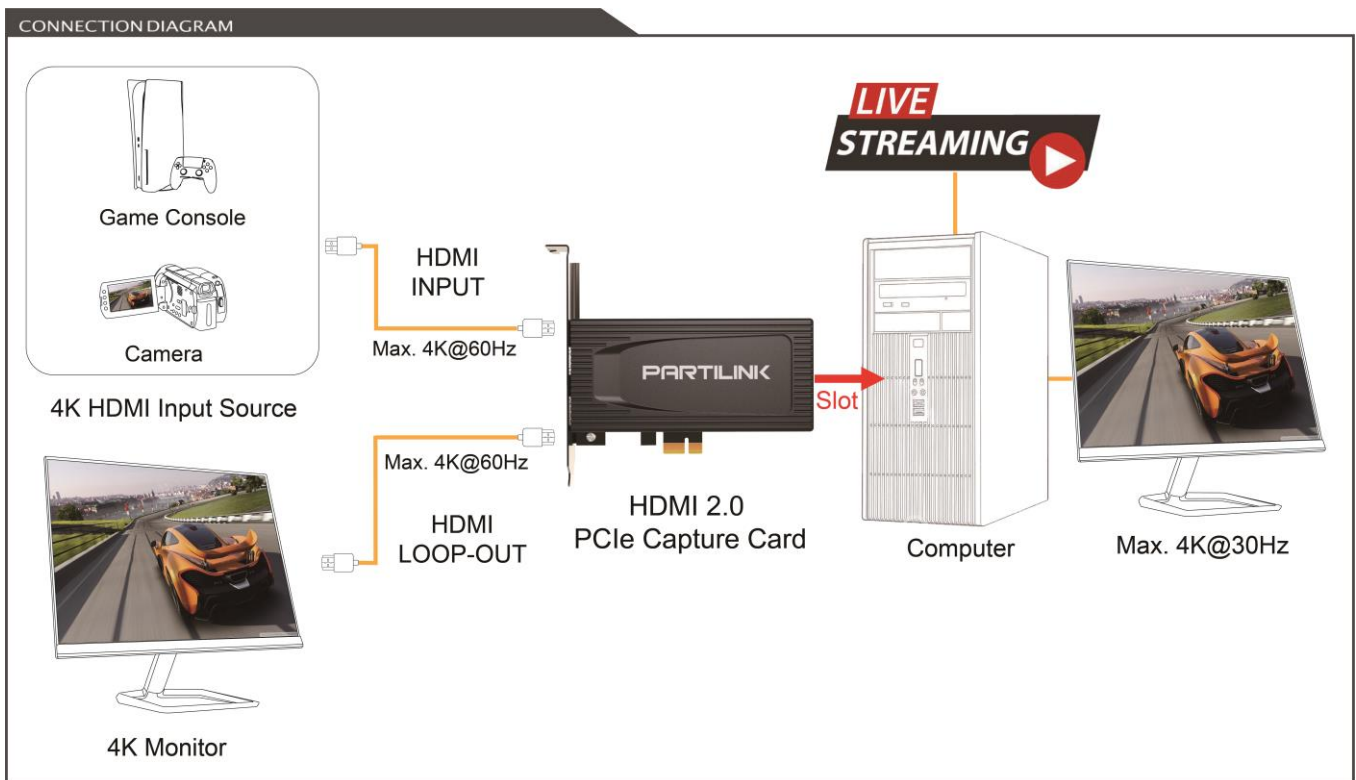
MODEL NO.	PCI-H01HP2	
INPUT INTERFACE	HDMI 2.0 Type-A x 2	
OUTPUT INTERFACE	PCI-E x 1, HDMI 2.0 Type-A x 1	
INPUT/ OUTPUT (LOOPOUT) RESOLUTION	3840 x 2160p 60/50/30/25/24Hz 2560 x 1440p 144/60Hz 1920 x 1080p 240/144/120/60/50/30/25/24Hz 1920 x 1080i 60/50Hz 1280 x 720p 60/50Hz 720 x 576p 50Hz 720 x 480p 60Hz 720 (1440) x 576i 50Hz 720 (1440) x 480i 60Hz 640 x 480p 60Hz	
CAPTURE RESOLUTION	NV12	YUY2
	3840x2160p 30 Hz 2560x1440p 60 Hz 1920x1080p 120/60/50/30/25 Hz 1280x720p 60 Hz 720x480p 60 Hz 720x576p 50 Hz 640x480p 60 Hz	2560x1440p 50 Hz 1920x1080p 60/50/30/25 Hz 1280x720p 60 Hz 720x480p 60 Hz 720x576p 50 Hz 640x480p 60 Hz
COLOR SAMPLING	RGB, YUV (YCbCr444, YCbCr422, YCbCr420)	
VIDEO FORMAT	NV12 , YUY2	
UAC AUDIO OUTPUT	Stereo / 16-bit PCM encoded audio at 48KHz sampling rates	
SYSTEM REQUIREMENTS	CPU	i5 Dual Core 2.8GHz or higher
	RAM	4GB or higher
	OS	Windows 8 and above MacOS 10.13 and above
ENVIRONMENT	Operating Temperature	0°C ~ 45°C
	Operating Humidity	20% ~ 90%
DIMENSION	120.9 x 133.7 x 21.6m (W x L x H)	
WEIGHT	160 G	

## 4. System Requirements

- CPU: i5 Dual Core 2.8GHz or higher
- RAM: 4GB or higher
- OS: Microsoft Windows 8.1/10  
MacOS (10.13 and above)

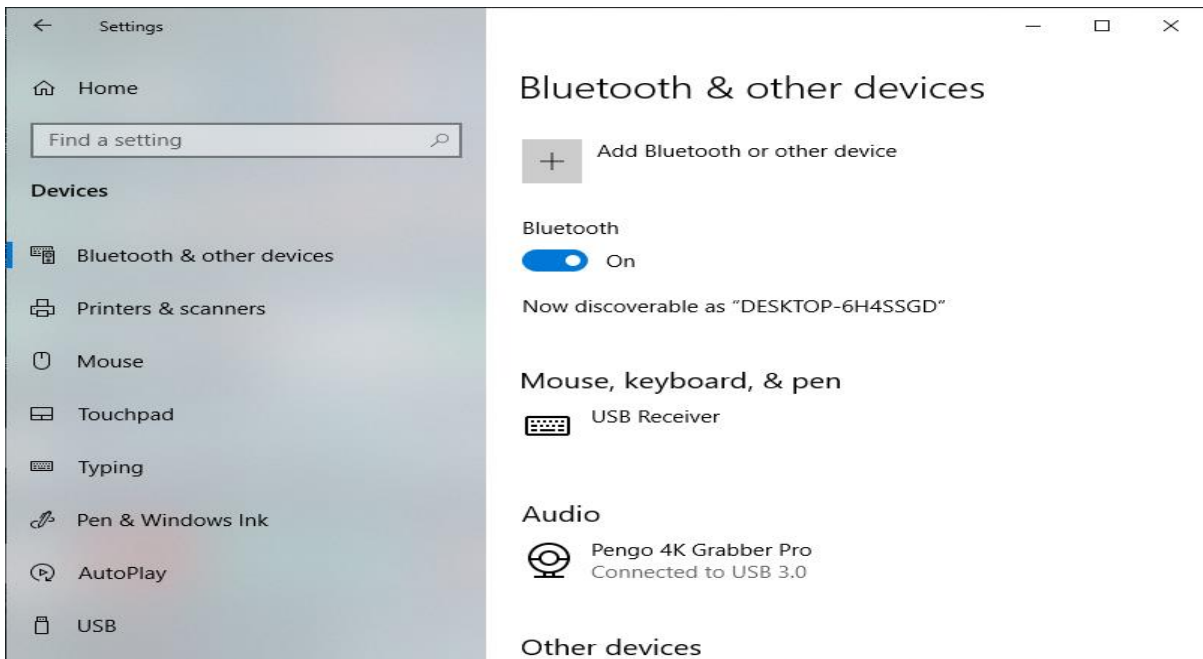
## 5. Installation

- Slot the Partilink PCI-H01HP2 PCIe capture card into the computer PCIe port.
- Plug-in your HDMI source with an HDMI Cable into the HDMI INPUT port of the Partilink PCI-H01HP2 PCIe capture
- Plug-in your display device with a HDMI Cable into HDMI LOOP-OUT port of the Partilink PCI-H01HP2 PCIe capture

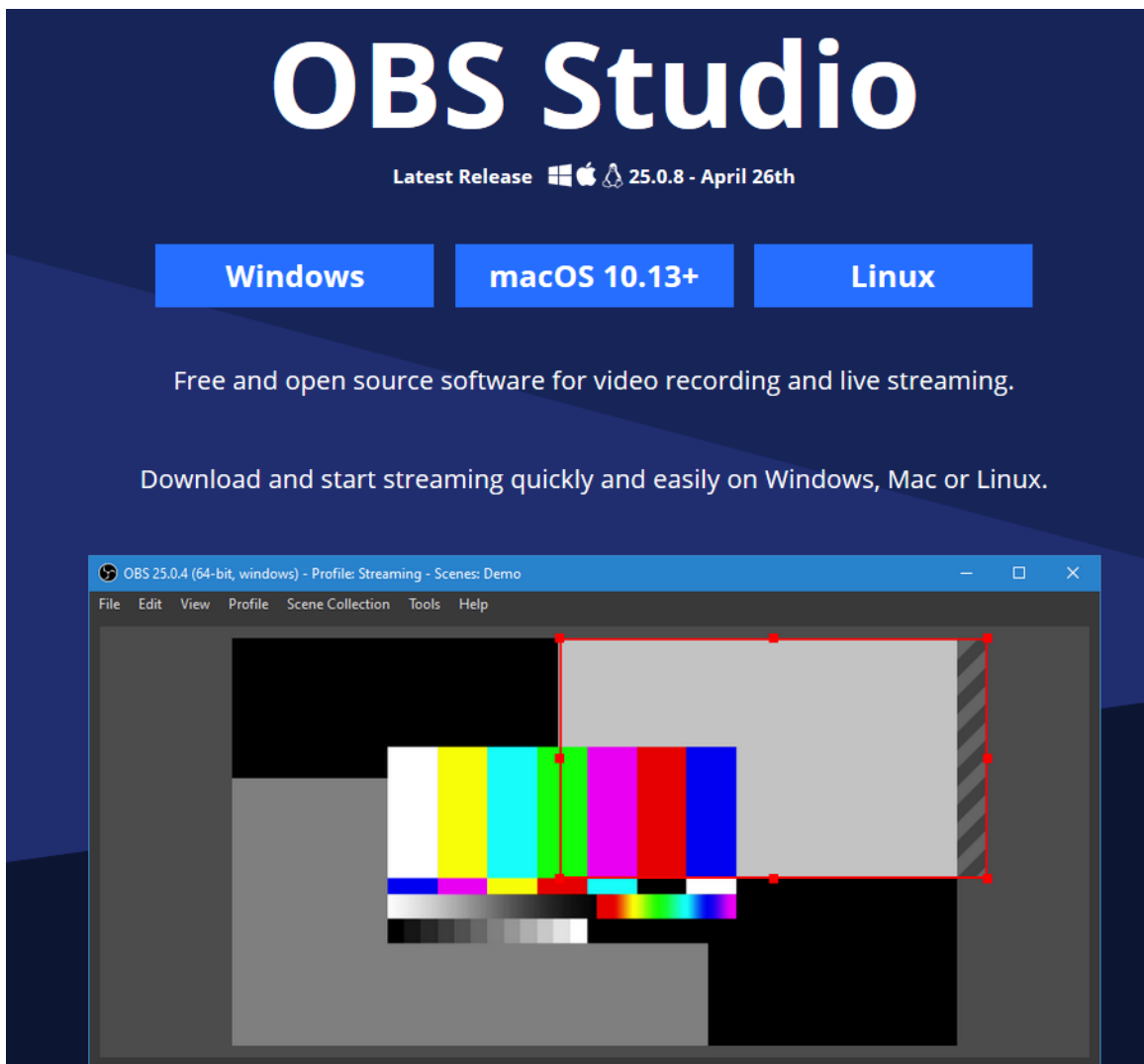


## 6. Capture Operation (Windows with OBS)

- (a) After plugging in your device, go to [Windows Settings] and then go under [BT and Other Devices] and make sure Partilink PCI-H01HP2 PCIe Capture is detected



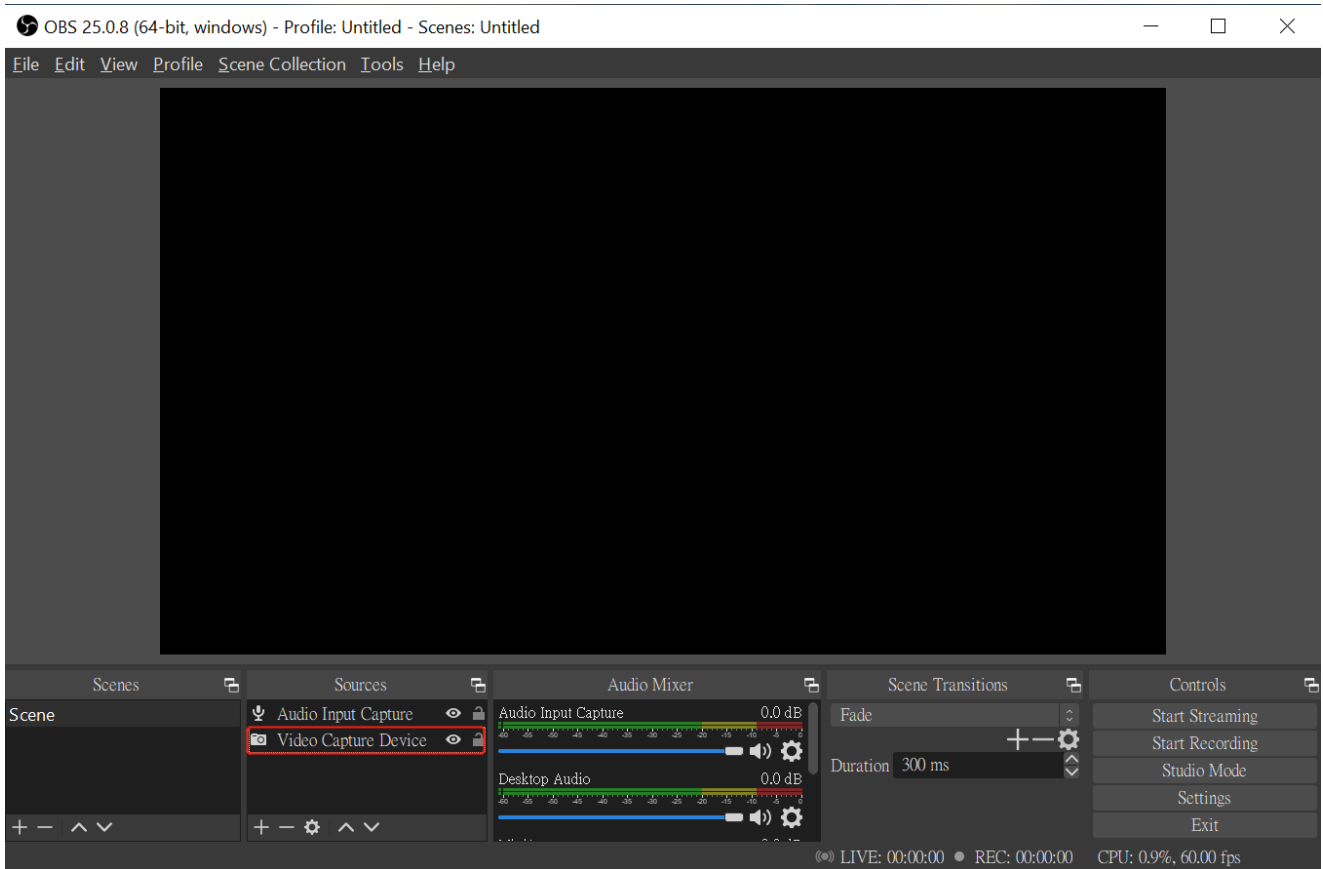
- (b) Download OBS Studio <https://obsproject.com/> (OBS-Studio-25.0.8-Full-Installer-x64. exe)



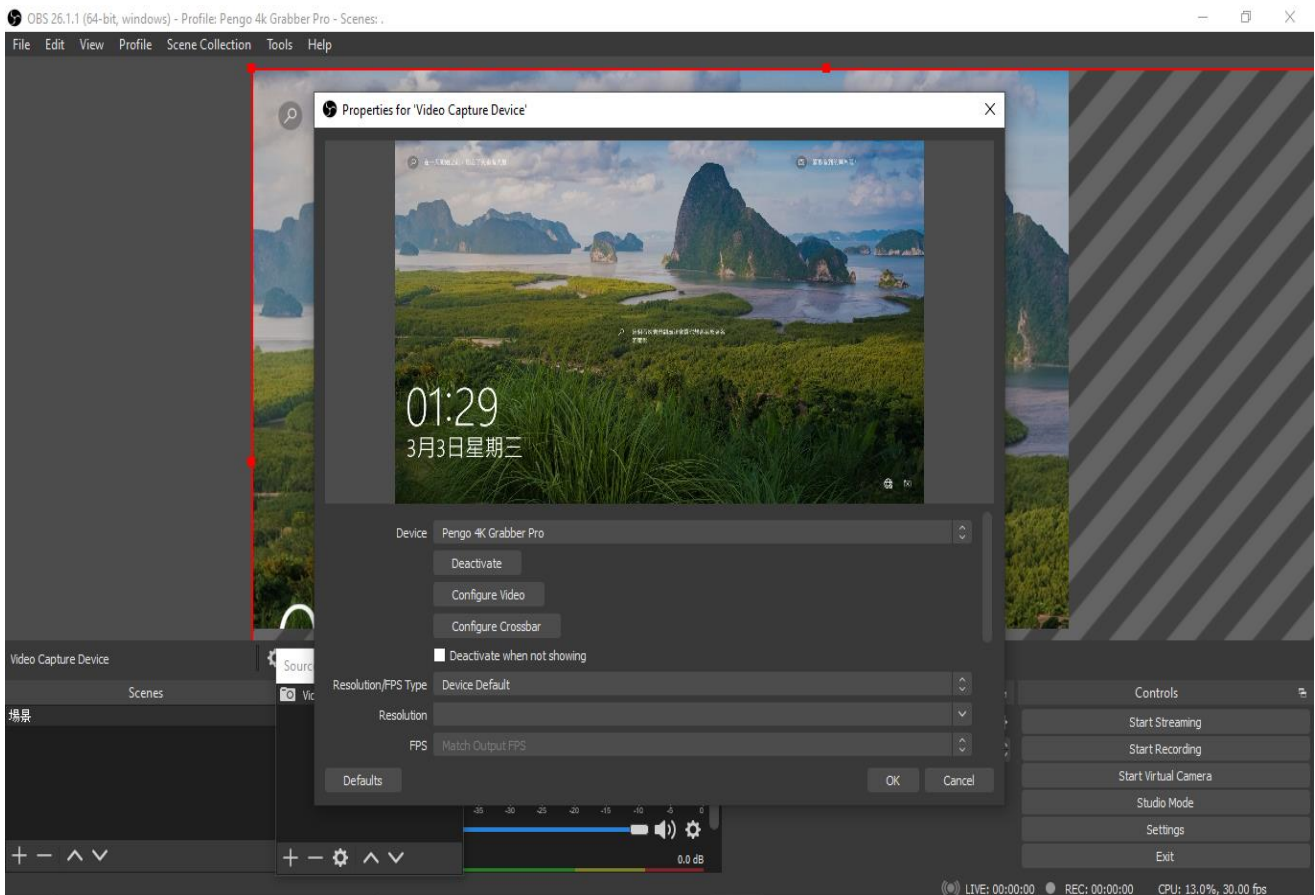
(c) Open OBS Studio. (version 25.0.8)

## 6.1 Video Setting

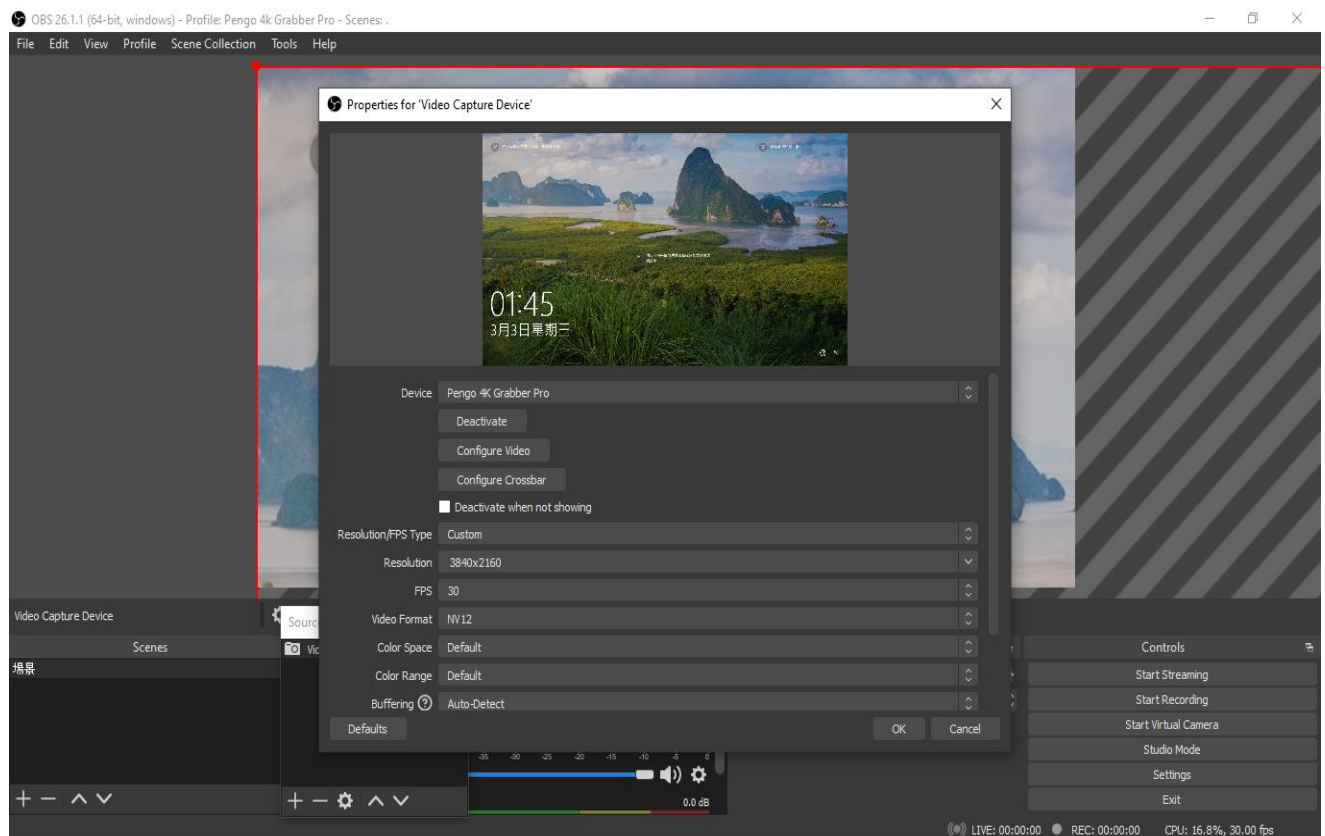
a) Add and select “Video Capture Device”, rename the source and click OK



b) Select “Partilink 4K PCIE Capture” as your device



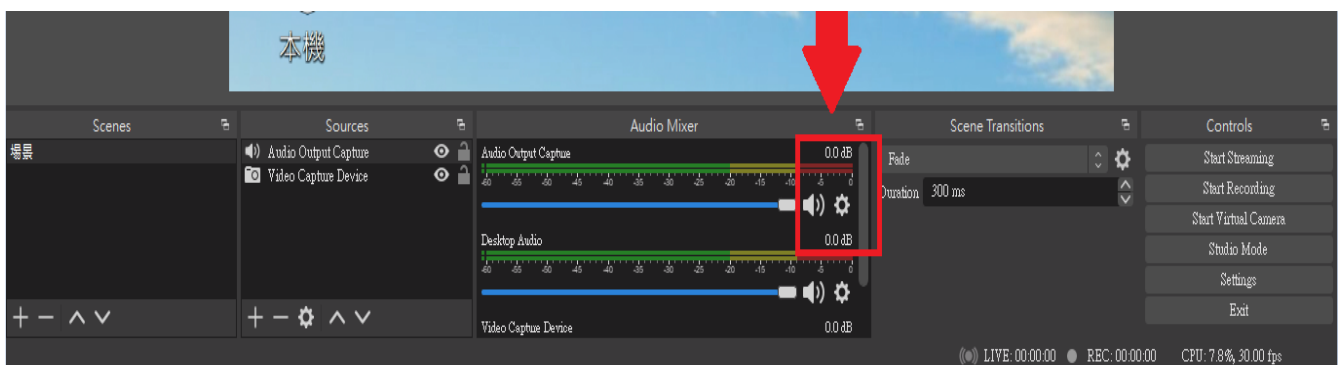
### c) Parameter Setting references are displayed as below



- Resolution/FPS Type: Custom
- Resolution: 3840x2160
- FPS: Match Output FPS (auto select: 30)
- Video Format: NV12
- Audio Device: HDMI (Pengo 4K Grabber)

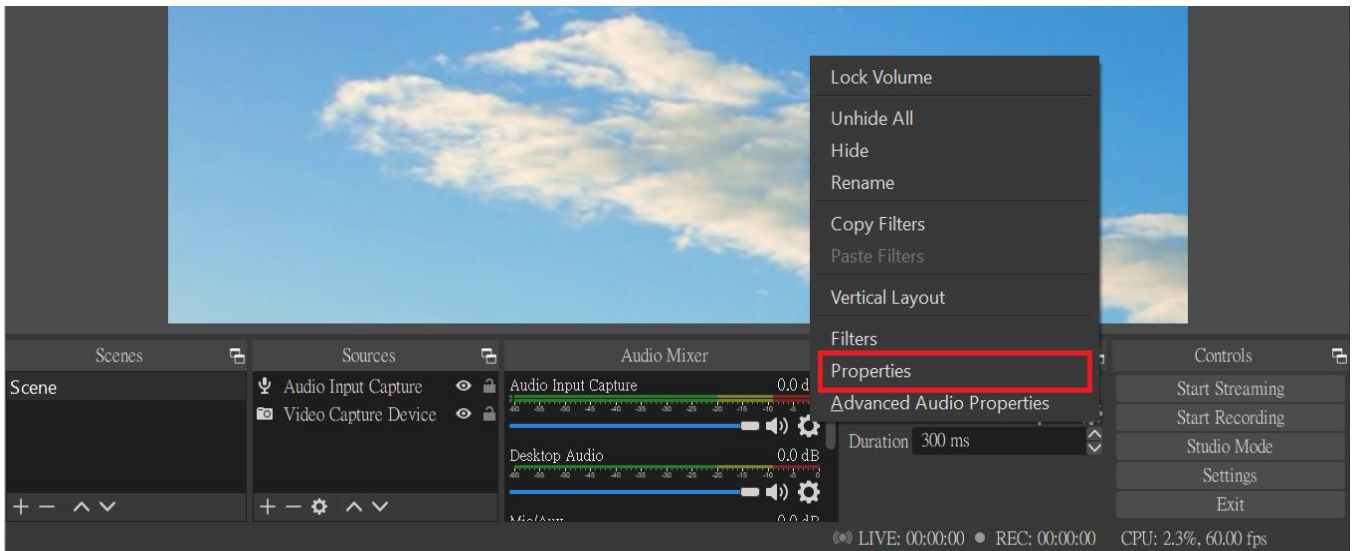
## 6.2 Audio Setting

### a) Click on the audio setting icon as displayed below

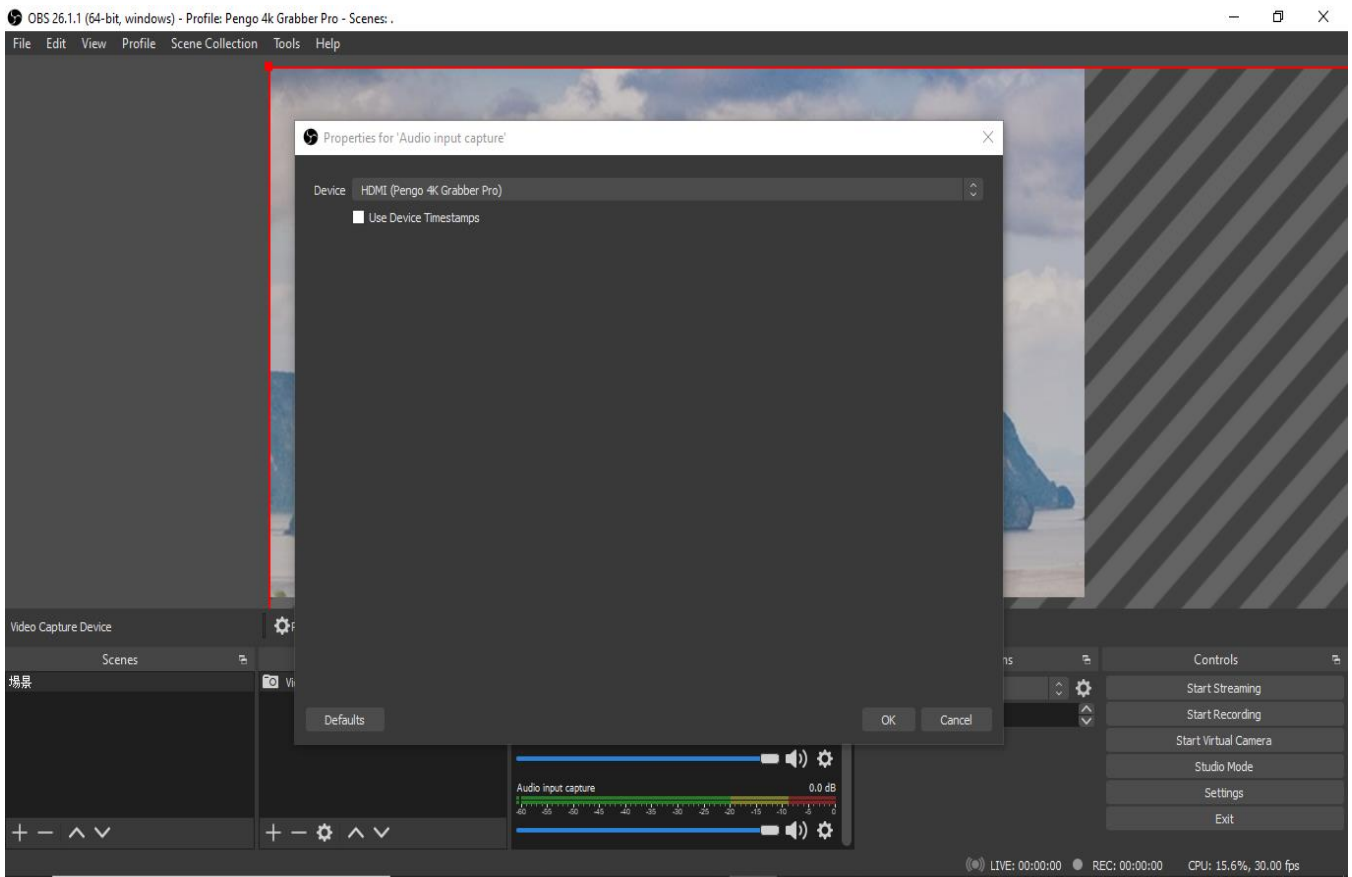




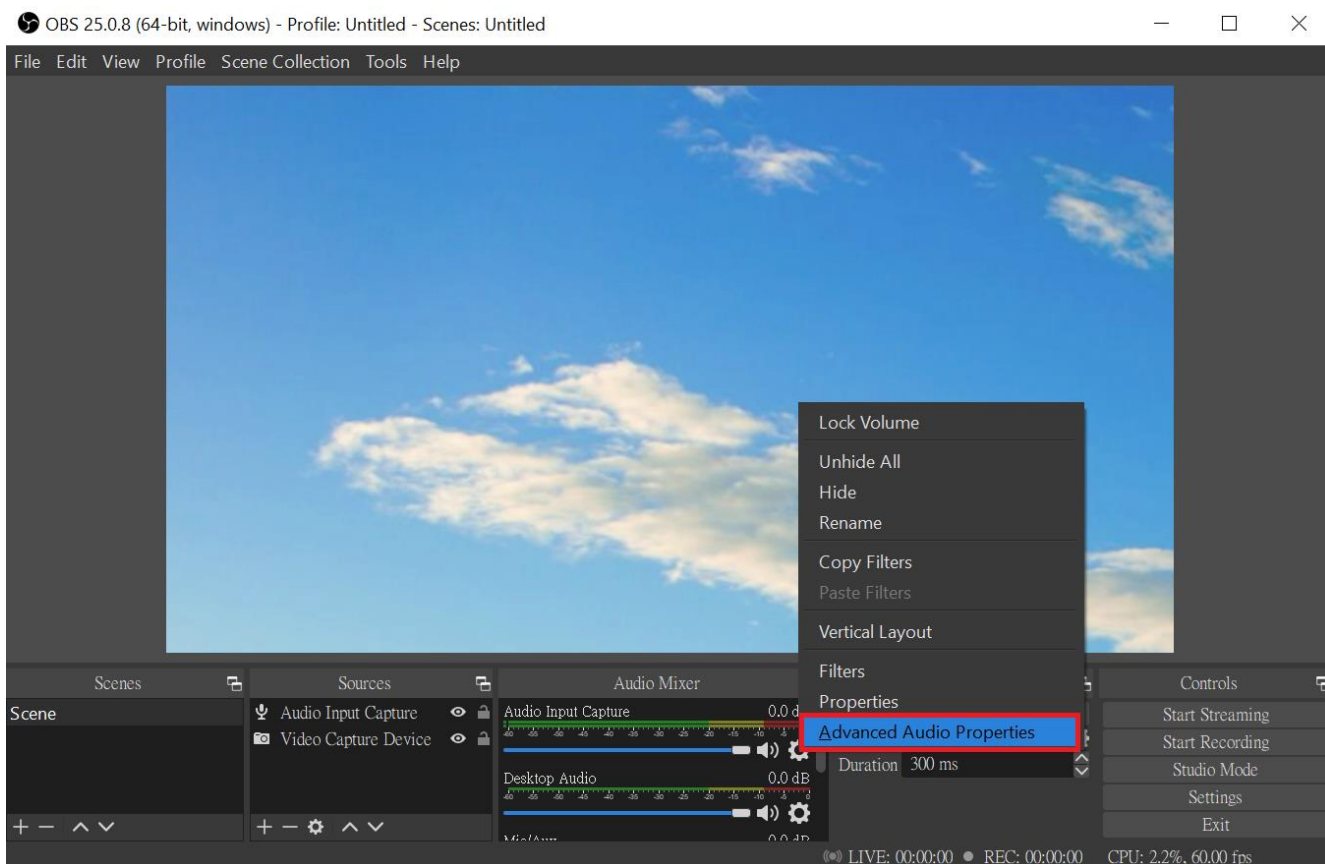
b) Select "Properties"



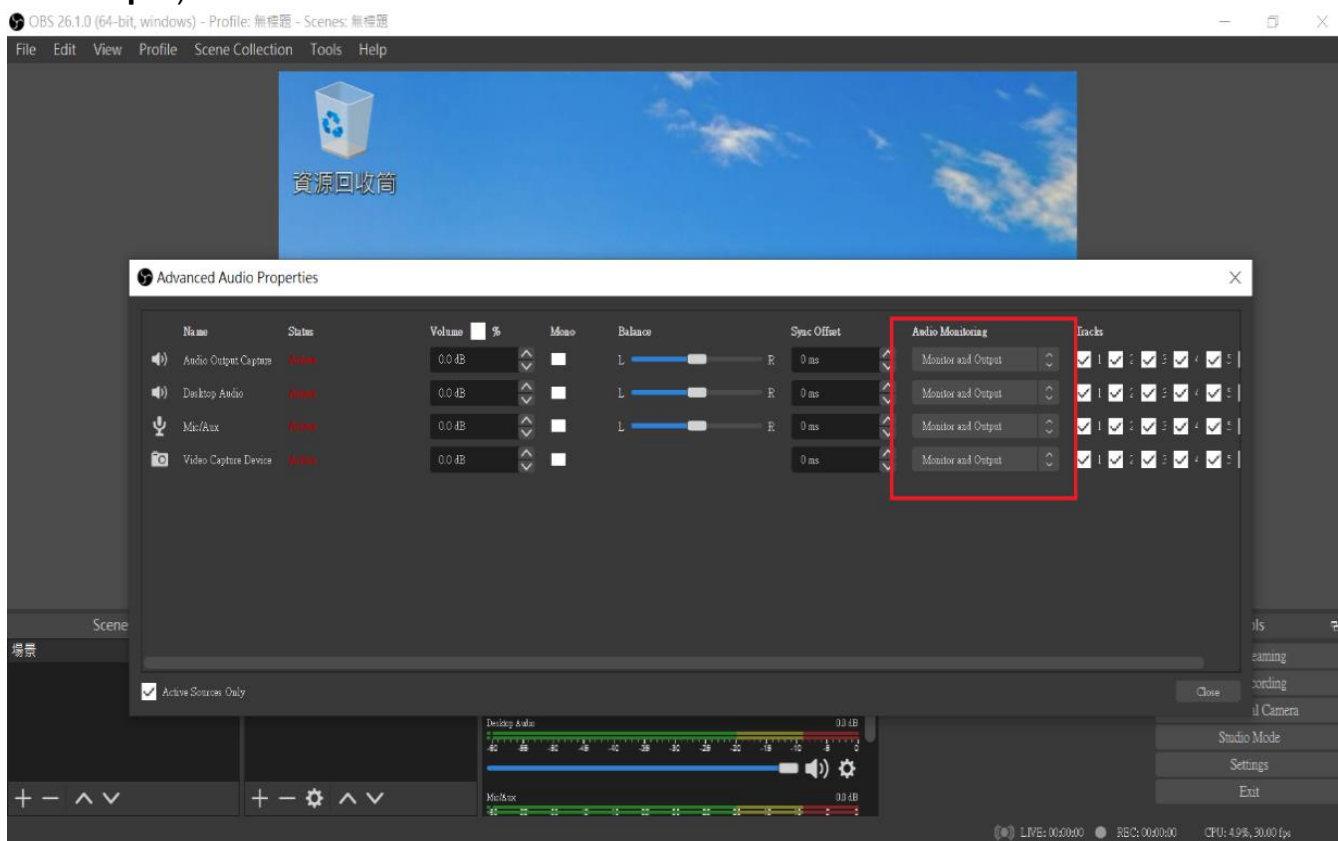
c) Under Properties: Select "Partilink 4K PCIe Capture" as your device



d) Under the Audio Setting Icon: Select “Advanced Audio properties”



e) Under the Advanced Audio Properties: Adjust your audio source to suggested preferences (🔊🎧) Microphone and speaker need to change the setting into **Monitor and Output**)



f) OBS Setting completed

**Note:**

- Different versions will have different interface slightly.
- Make sure your source does not have HDCP, we do not support HDCP.
- We reserve the right to make any updates without prior notice

**7. Package Content**

- Partilink PCI-H01HP2 PCIe Capture Card x 1
- User Manual x 1
-

# PARTILINK



[sales@partilink.com](mailto:sales@partilink.com)

PCI-H01HP2 User manual (210511 V.1)