

V33-H04H10 / V43-H04H16

HDMI 2.0 MULTIVIEW VIDEO WALL PROCESSOR

(4 in, 10 out / 4 in, 16 out)



-V33-H04H10-



- V43-H04H16 -



Multiview



Scaler



Videowall



Telnet Control



PiP PoP



Audio R/L

OVERVIEW

The Partilink V33-H04H10/V43-H04H16 HDMI 2.0 Multiview Video Wall Processor is an all-in-one video wall system with multiview, scaling, customizing screen layouts, audio management. Its user friendly web UI, RS232, RS485, RS422 and telnet modular and robust design made the video wall control effectively.

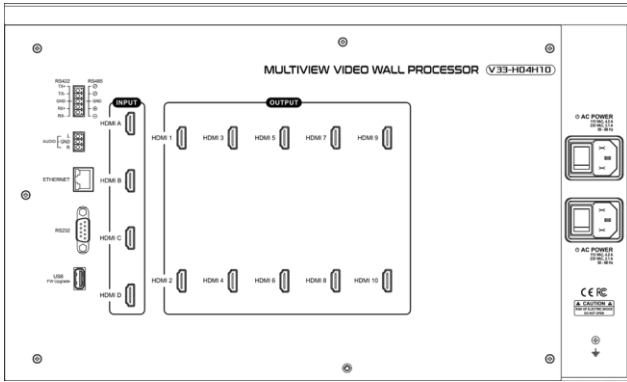
FEATURES

- Fast switching between input channels and combined multiple source images on video wall
- Handles HDMI® signals with Deep Color and HDCP 1.4/2.2 sources
- Input resolution up to 4K @60Hz, 4:4:4 color sampling
- Output resolution up to 4K @60Hz, 4:4:4 color sampling
- Upscaling up to 4K @60Hz, 4:4:4 color sampling and able to downscale as well
- PiP, PoP, quad-view and multiple customized screen layout configurations for video wall
- Rotation (R90° and L90°) in full screen layout
- Stereo audio output
- Control by web UI, RS232, RS485, RS422 and telnet
- Firmware upgrade via USB port
- Dual built-in power supply
- Display modes including video wall, multiview window
- Multiple windows displaying across multiple screen array without screen boundary.
- Able to build a 4K and even an 8K video wall system for supporting each output 4K@60Hz
- Able to build various video wall array system 1x10, 2x5, 3x3, 5x2, 10x1 by 10 output model and 2x8, 4x4, 8x2 by 16 output model

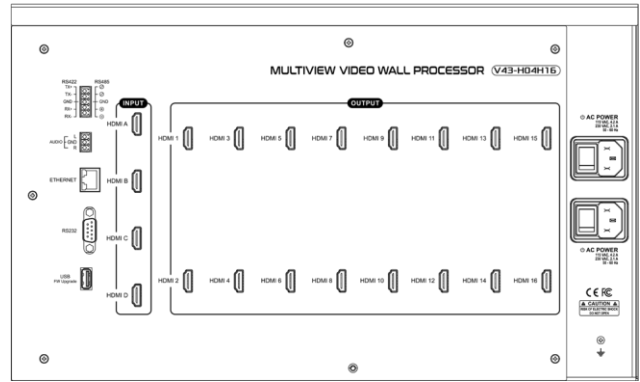
SPECIFICATION

MODEL NO.		V33-H04H10	V43 -H04H16
HARDWARE	System Structure	pure hardware	
	Operating System	no CPU and operating system	
INPUT/ OUTPUT	Inputs	4 x HDMI 2.0	
	Output	10 x HDMI 2.0	16 x HDMI 2.0
	Audio Output	terminal block 3 pole, stereo	
IMAGE PROCESSING	Display Mode	full screen, PIP, POP, rotation R90°/ L90°, cross screen, quadview	
	Input Resolution	4096 x 2160p (60Hz, 50Hz, 24Hz) 3840 x 2160p (60Hz, 50Hz, 30Hz, 25Hz, 24Hz) 2560 x 1080p (60Hz) 1920 x 1080p (60Hz, 50Hz, 30Hz, 25Hz, 24Hz) 1920 x 1080i (60Hz, 50Hz) 1280 x 720p (60Hz) 720 x 480p (60Hz, 50Hz) 720 x 576p (50Hz) 640 x 480p (60Hz, 50Hz)	
	Input Color format	4:4:4	
	Output Resolutions	4096 x 2160p (60Hz, 50Hz, 24Hz) 3840 x 2160p (60Hz, 50Hz, 30Hz, 24Hz) 2048 x 2048p (57Hz) 1920 x 1200p (60Hz) 1920 x 1080p (60Hz, 50Hz, 30Hz, 24Hz) 1600 x 1200p (60Hz) 1280 x 720p (60Hz, 30Hz)	
	Output Color Format	4:4:4	
	Output Color Depth	24 bpp	
	Scaler	scaling up to 4K @60Hz, 4:4:4 color sampling and downscaling as well	
	Video Bandwidth	up to 18 Gbps	
	HDMI Compliance	HDMI 1.4 And HDMI 2.0	
	HDCP Compliance	HDCP 1.4 And HDCP 2.2	
CONTROL METHODS	RS232 / Telnet	1 x D9 female connector / compatible with third party control system	
	RS485 / RS422	5-pole terminal block	
	Ethernet Port	1 x RJ45 / compatible with third party control system	
	Web UI	browser / touch screen via smartphone or tablet	
STABILITY	Safety	hardware structure, no risk of virus interference	
	Running Time	no auto-reboot during 365 days/year, 7days/7, 24h/24	
FIRMWARE	Possible Upgrade	1 x USB 2.0	
POWER	Power Supply	dual built-in power module 100-240 VAC / 50/60 Hz	
	Power Consumption	205W	300 W
	Dual Power Supply	yes	
ENVIROMENT	Operating Temperature	0°C ~ 40°C	
	Operating Humidity	20% ~ 90% RH	
	Storage Temperature	-20°C ~ 60°C	
PHYSICAL	Dimensions	440 x 264 x 421 mm (L x W x H)	
	Weight	14.8 KG	16.3 KG
	Fixing Components	handles, footpad and screws	

- V33-H04H10 -



- V43-H04H16 -

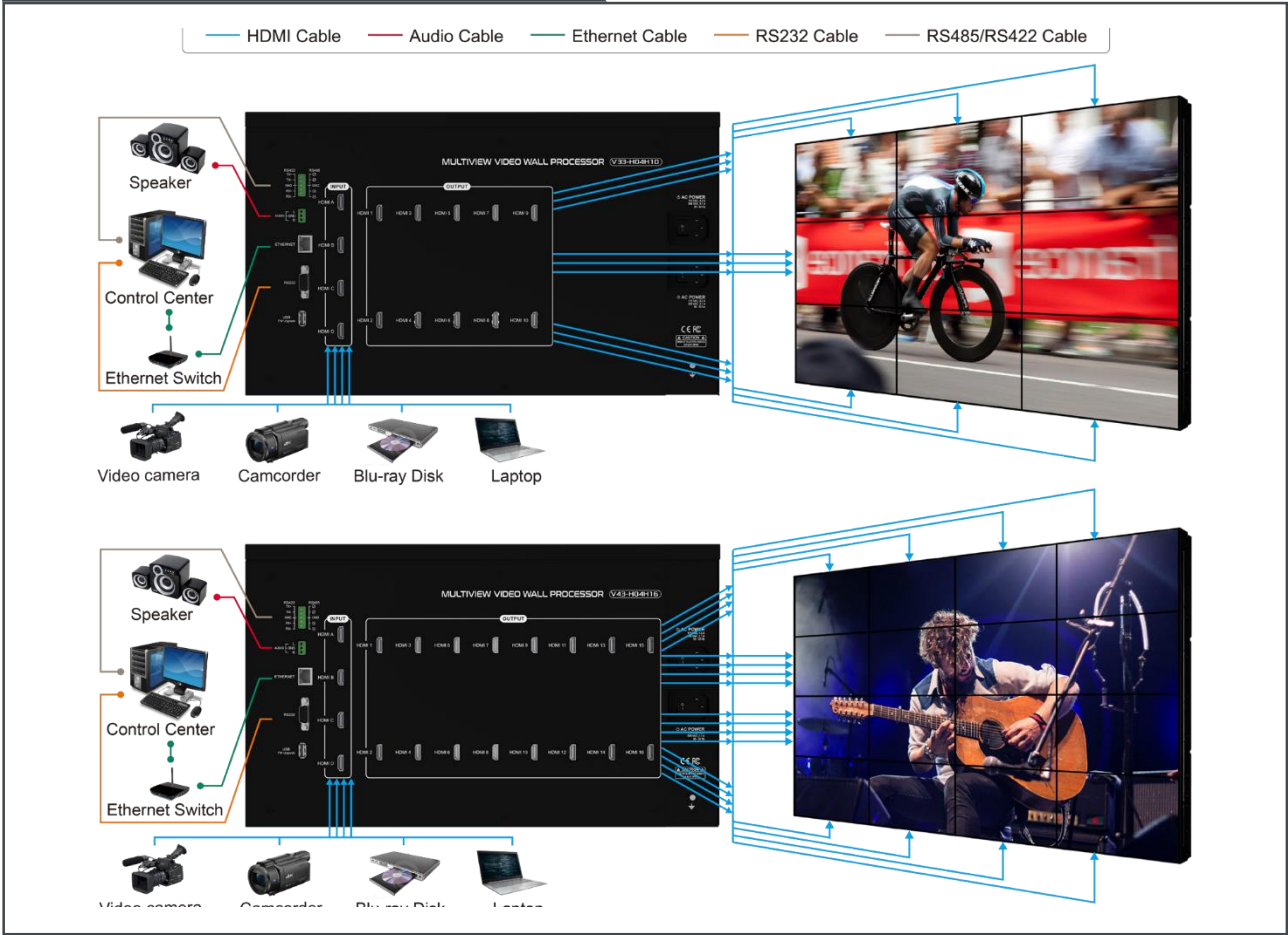


APPLICATION

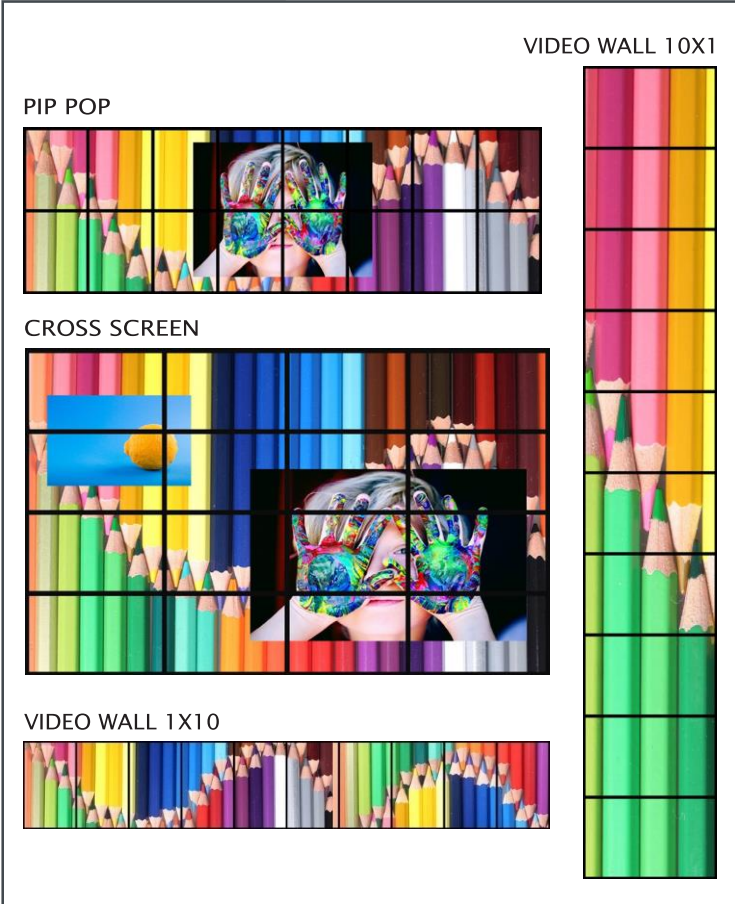
- Hospitality in lobby, hospital, clinic
- Conference room presentation
- Advertising in shopping mall, supermarket, restaurants
- Broadcast in airport, bus or train station, classroom
- Rental and staging
- Entertainment in restaurant, bar, multimedia room, boardrooms, home cinema
- Integrating with DVR, IP camera as a surveillance system
- Monitoring in control room, bank and stock market



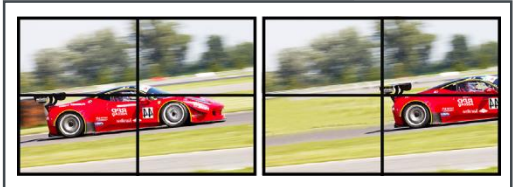
CONNECTION DIAGRAM



DISPLAY MODE



FRAME SYNCHRONIZATION



WEB UI

