

# HDMI 2.0 MULTIVIEW VIDEO PROCESSOR

VP - QV41H



For simultaneous display of four HDMI 2.0/1.4 sources on one screen with output resolutions up to 4K UHD - 4K @60Hz 3840 × 2160 4:4:4

## OVERVIEW

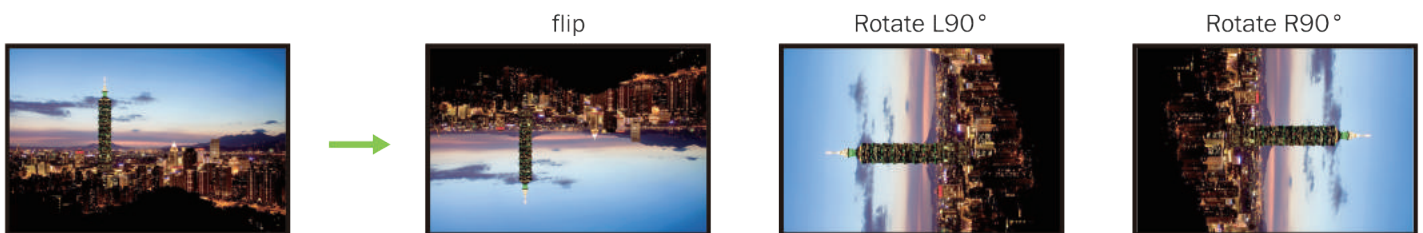
The Partilink VP-QV41H Multiview Video Processor is a user-friendly HDMI 2.0 video scaler and multiviewer designed to view max. 4 video sources on one 4K@60Hz 4:4:4 display simultaneously. It handles any input resolution up to 4K@60Hz to output maximum 4k@60Hz or downscale the resolution, adjusts its aspect ratio to match the native resolution of your screen to display.

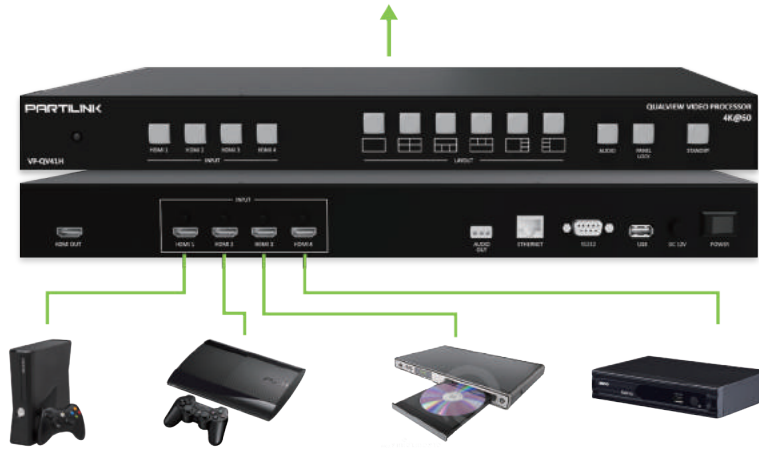
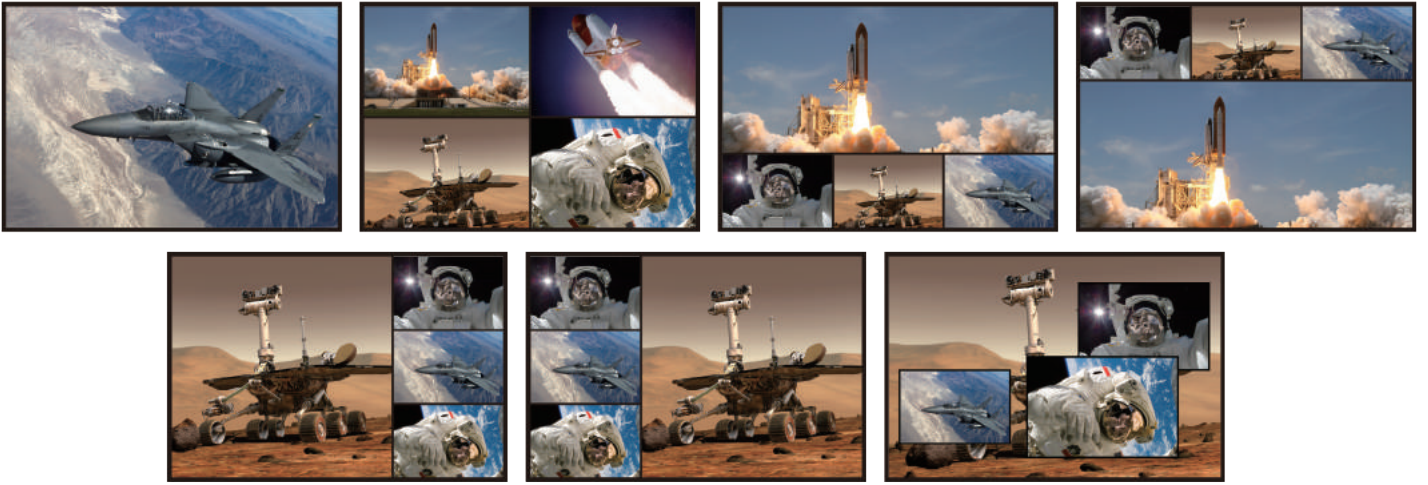
## FEATURES

- Fast switching between input channels and combined multiple source images on single monitor
- Handles HDMI® signals with Deep Color and HDCP 1.4 / 2.2 sources
- Input resolution up to 4K@60Hz, 4:4:4 color sampling
- Output resolution up to 4K@60Hz, 4:4:4 color sampling
- Upscaling up to 4K@60Hz, 4:4:4 color sampling and able to downscale as well
- PiP, PoP and multi-view layout configurations
- 14 different screen layouts by 6 preset screen layouts and extra 8 customized screen layouts
- Rotation (R90° and L90°) when input resolution up to 1080p and flip output in full screen layout
- Stereo audio output
- Control by front panel button, IR remote control, RS232/Telnet and Web UI control
- Firmware upgrade via USB port

## APPLICATION

- Hospitality in lobby, hospital, clinic
- Conference room presentation
- Advertising in shopping mall, supermarket, restaurants
- Broadcast in airport, bus or train station, classroom
- Rental and staging
- Entertainment in restaurant, bar, multimedia room, boardrooms, home cinema
- Integrating with DVR, IP camera as a surveillance system
- Monitoring in bank and stock market





## SPECIFICATION

MODEL NO.	VP-QV41H		
HARDWARE	System Structure	pure hardware	
	Operating System	no CPU and operating system	
INPUT/ OUTPUT	Inputs	4 x HDMI 2.0 with locking	
	Output	1 x HDMI 2.0 with locking	
	Audio Output	terminal block 3 pole, stereo	
IMAGE PROCESSING	Display Mode	full screen, quad view, PiP, PoP	
	Input Resolution	up to 3840 x 2160@60Hz, 4:4:4 color sampling	
	Max Output Resolution	up to 3840 x 2160@60Hz, 4:4:4 color sampling	
	Output Resolutions	3840x2160 - 60Hz, 50Hz, 30Hz 1280x720 - 60Hz	1920x1080 - 60Hz 720x480 - 60Hz
	Output Color Depth	8 bpc (24 bit/px)	
	Scaler	scaling up to 4K@60Hz, 4:4:4 color sampling and downscaling as well	
	Video Bandwidth	up to 18 Gbps	
	HDMI Compliance	HDMI 1.4 and HDMI 2.0	
	HDCP Compliance	HDCP 1.4 and 2.2	
CONTROL METHODS	Front Panel Buttons	4 x select HDMI 1,2,3,4 input and/or audio, 6 x display layout, 1 x Audio Selection, 1 x Panel lock, 1x Standby	
	IR	1 x IR remote control	
	RS232/ Telnet	1 x D9 female connector / compatible with third party control system	
	Ethernet Port	1 x RJ45	
	Web UI	browser / touch screen	
STABILITY	Safety	hardware structure, no risk of virus interference	
	Running Time	no auto-reboot during 365 days/year, 7days/7, 24h/24	
FIRMWARE	Possible Upgrade	1 x USB 2.0	
LED INDICATOR	Input	blue backlight	
	Output	blue backlight	
	Panel Lock	blue backlight	
	Standby On	red backlight	
	Standby Off	green backlight	
POWER	Internal Power Supply	DC 12V/2A, locking barrel connector	
	Power Consumption	15W	
	Power Adaptor	universal power adapter	
ENVIRONMENT	Operating Temperature	0 °C~45 °C	
	Operating Humidity	20~90% RH	
	Storage Temperature	-20 °C~60 °C	
PHYSICAL	Dimensions	440.4 x 230 x 45 mm (L x W x H, standard 1U)	
	Fixing Components	Rear bracket, footpad and screws	
	Weight	3.0 KG	